



An Emblem of Excellence

CIVIL WORKS

FABCON 
Civil Works (Pvt) Ltd.





Naeem Aslam Shah
Director



Syed Sameen Aslam
Chief Executive

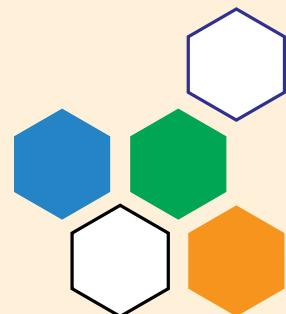
Oneness of Vision...

Allah Almighty has made and decked this world with colors and features of astounding diversity which render this planet a place worth-living. However, creation is not a stagnant facet, and man, endowed with zeal and zest of creation, innovative nature and aesthetic sense, endeavors to optimize the things created by God. In this regard, his passion of construction coupled with imaginative skills has few parallels and the embellishment of natural world knows no bounds.

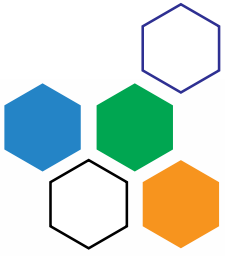
The history of construction bears witness to the inventive nature inherent to man who creates magnificent buildings, bridges, roads, flyovers, minarets, tombs of wonderful designs and sizes and these creations have virtually changed the look of the world for better. In fact, all the Seven Wonders of the world are constructions of marvelous design and dimension as Egyptian Pyramids seem to mock mutability, Great Wall of China marvels mind, and Taj Mehal fascinates eyes of beholders. Sky scrapers of the West appear virtually sky-touching. Civil construction developments are unabated.

Today, we dwell in the world where civil construction is identical with structural at reasonable expenses. This is the building block which came into making of FABCON.

Engineering and archeological manifestations feature every corner of the civilized world, providing us comfort and protection against violent nature. Modern method and equipment contribute much in architectural structures which combine beauty, strength and economy. FABCON, with its expertise in latest developments in construction, goes a step ahead in this field and customizes modern technology with trends and needs of our land and is known to create structures which are peerless in beauty and durability.



My Architectural Objectives...





When I founded FABCON, I confronted an uphill task to reconcile my vision with resources of the land and to achieve a mode of construction that should be suitable for the trends of people with a difference. After profound study of international construction engineering, I came up with OEW (Optimized Engineering Works) which is client friendly in any given situation, circumstances and budget with quality assurance at every level. It is a better arrangement instead of standard engineering which, though very reliable in normal standards, fails to deliver in diverse conditions on account of its rigid parameters.

My commitment to initial plan saw massive success as Pakistani economy entered new and dynamic phase of denationalization of institutions which allowed them to seek private follow-up in the best of their interest. By the Grace of God, we have few counterparts when it comes to the matter of completion of projects in time, quality, standard, and of course, economy; the most important of them all. We are the leaders in design innovations.

FABCON is fully receptive to Geo-Technical Engineering, Material Engineering, Environmental Engineering, Structural Engineering, Municipal Engineering and Transportation Engineering. We are where our august clients anticipate us to be. The massive earthquake of 2005 and the recent of flood of 2010 have exposed many flaws of our conventional construction. Natural calamities can't be averted but their havocs can be minimized with well-planned construction. FABCON is here before everyone else to come up with a vision to construct such structures as could withstand onslaught of such calamities to the maximum. This is my determination to safeguard my country from such devastations as we had to face due to lack of proper preparations. In this regard, FABCON has a well-planned outlook to initiate a major ground-breaking task to rebuild the country.

By the Grace of Almighty, we develop, plan, construct, engineer and fabricate Structure keeping in view the latest developments in this regard. Our team of committed engineers, project-planners and fabricators always come up with novel and updated technical ideas and our clients' satisfaction is our chief assets. Our works completed in record time, reasonable budget and beautiful look speak for our efficiency. Many public and private firms patronize us and we are committed to satisfy them with all our potential of men and machines.



Operational Sphere of FABCON

FABCON with its technical expertise is on its way to translate the concept of national building into reality; and for this purpose; we are fully equipped with cutting-edge technology that goes far beyond mere machine works. Construction of building is not merely a task of brick and cement erection; it is a creative activity which calls for vision, skill and a well organized setup which corroborates the best skilled personnel into a single working entity. We make up the most efficient working unit which comprises the best engineers, masons, draftsmen and devoted workers who mean business. We can anticipate the prospects of the upcoming time when new ideas and ideals will define new trends in construction.

Proper and standard material is the key factor in construction works because any lapse in the quality of material can cause serious damage, both of life and property. In this concern, FABCON is uncompromising. We have a procurement team which fully understands the need of quality purchases.

We have an efficient team of designers who understands the task of making outline of the project in the best possible way. The masons and workers are a corner stone of our organization and we have those people who understand the need of hard work and honest effort. We can boast of our commitment to work by all our means. The main pillar of our success is the devotion and love with which we discharge our duty and see the satisfaction of our clients.

We are fully conversant to the trends and need of our land which has a specific attitude but at the same time we are not blind mimics. We have a constructive outlook which is both aesthetic and innovative. We follow the rule of hard work and honesty. That's why; the clients of FABCON feel utmost contentment when they assign us any task.

FABCON Group

Introduction and parameters of services



FABCON Design & Engineering (Pvt.) Ltd

Specialized in design, manufacture and installation of Plants and Machinery, Pressure Vessels, Boilers, Heat Exchangers, API Tanks, Cranes and Steel Structures



FABCON Civil Works (Pvt.) Ltd

Civil Works execution Company having expertise in construction of civil structures including Buildings, Highways, Dams and Defence structures of various natures



FABCON Energy (Pvt.) Ltd

LPG marketing company with special emphasis to the industrial and commercial sector



FABCON Trading

A trading Company dealing in export, import and supply to local market : the machinery, engineering products, technical material and general products





Corporate & Legal Status:

- Private Limited
- Registered with Pakistan Engineering Council
- Registered with Sales Tax and Income Tax
- Registered Manufacturer, Importer and Exporter

Financial Institutions:

- **Habib Bank Ltd**
Doctors Hospital Johar Town, Lahore
- **Allied Bank Ltd**
Khyban-e-Jinnah, Lahore

Organizational Structure

CEO with its directors's board

Corporate Affairs

Financial
Legal
Corporate
Communications

Information
Technology
Human Resource
Administration

Marketing & Business Development

Quantity Surveying
Costing & Estimation
Proposal Management & Tendering
Advertisement

Material Management

Local Procurement
Offshore Procurement
Storage & Handling

Planning & Design

Project Planning
Execution Level Planning
Design & Engineering
Customer Care Centre

Construction Works

Project Management
Execution Works
Precast Works
Maintenance
Renovation

Quality Assurance & Control

Internal Auditing
Quality Assurance
Quality Control
Registrations & Certifications

Health, Safety & Environment

Policies
Implementation
Review



Certification & Registration

- | | |
|--|--|
| ● Quality Management System | ISO 9001:2008
Bureau Veritas & UKAS |
| ● Environmental Management System | ISO 14001:2004
Bureau Veritas & UKAS |
| ● Occupational Health & Safety Management System | OHSAS 18001:2007
Bureau Veritas |

Registered with:

- National Highway Authority
- National Logistic Corporation
- Military Engineering Services
- Strategic Plans Division
- Civil Works Organization
- Directorate General Munitions Production





Specialization

Domain of our specialization is as follows;

- Project Management
- Material and Resources Management
- Planning & Design of Engineering Projects
- Construction Works (including Pre-casting)
- Rehabilitation Renovation on large scale



Specialization application

Our business area of application including the followings;

- Chemical & Petrochemical
- Textile (Weaving, Spinning, Printing)
- Thermal Power Plant
- Hydro Power Plants
- Cement Factories
- Fertilizers
- Oil & Gas and Refineries
- Ceramic Industry
- Sugar & Distilleries
- Telecommunication & Electricity Sector
- Mechanical Workshops & Foundries
- Government Organizations (NHA, C&W, PWD, LDA, WAPDA, CDA, Distt. Government etc.)
- Defense Organizations (FWO, NLC, CWO, SPD, MES etc.)

Sectors of Activities



1. Industrial Construction

Civil and structural works associated with industrial project are an area of expertise of FABCON. FABCON has already been pre-qualified for its business with reputed industries of Pakistan.

We offer a wide range of services that comprise of all aspects of industrial trade. Our services cover the followings:

Construction

- RCC foundations
- RCC Structure
- Buildings
- Drainage & Sewerage System
- Roads & Pavements

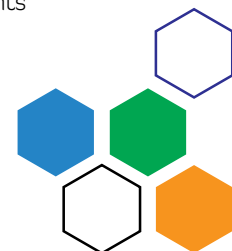
Installation

- All kind of Machinery
- MCC, Electrical equipment and Electrification
- Installation of Electronic Controls and instrumentations
- Commissioning of Project

2. Housing & Urban Development

We proudly plan and build the housing schemes and government projects by considering all the aesthetics, seismic strength, and space management related aspects with advanced level of techniques to materialize the desires of our customers:

- Large Shopping Malls & Arcades
- Multi Storey Buildings (Residential & Commercial)
- Housing Colonies
- Academic Blocks
- Hospitals
- Mosques
- Stadium & Gymnasiums
- Barracks and Hotels
- Boundary Walls, Fences and Railings
- Flexible & Rigid Pavements





3. Mega Infrastructure

FABCON is on its way to adopt and introduce new method of construction to facilitate mega structures on modern lines. It is acquiring tools and expertise to innovate building construction on modern lines keeping in view the trends of our land and culture.

- Dams & Reservoirs
- Water Supply Storage Tanks & Distribution System
- Irrigation System
- Motorways
- Highways
- Municipal Networks

These include under passes

- Overhead Bridges
- Highway Bridges
- District & Village Road Bridges
- Barriers, Fences and Railing
- Tunneling

4. Defence Construction

FABCON takes pride in serving our Armed Forces with the execution of diverse projects which Pak Army assigns to us. It manifests prime of confidence in our skill, patriotism and devotion with which we are committed to serve the nation. We are fully conscious of our duties in serving the Army and our love for our land is the guiding principle to perform our task well.

- Senior Staff Residential & Office Buildings
- Gymnasiums and Barracks
- Warehouses and Prefabricated Sheds
- Air Bases
- Ordnance Factory Buildings
- Entertainment Halls, Canteens
- Concrete Bunkers
- Parking Sheds
- Radar Towers
- Storage Facilities in Cantonments
- Underground Civil works



5. Public Health & Engineering

FABCON has shown worth-while skills in water sanitation and sewerage sector by keeping in view the value of hygienic in urban life. It has been a raging issue in our domestic and industrial sectors how to manage sewage water without disturbing ecological balance. FABCON is well equipped in water treatment concern and it is geared up to serve government and private sector if we are assigned any task.

- Water Sanitation Facilities
- Providing and installing Sewerage System
- Water Treatment Plant
- Piping Network

6. Telecommunication and Electrical Networking

FABCON has acquired prime competence in construction of telecommunication and electrical towers. We have latest equipment to erect towers on modern lines which aim at quality control and cost reduction.

- Construction of Tower Foundation
- Installation of towers
- Diesel generators Installation
- Transmission lines
- Sub-stations
- Associated civil works

7. Horticulture and Landscape

FABCON is a fabrication and construction company which deals in steel and concrete structures and equipment but at the same time we are not alien to delicate aesthetic beauty of our land. We have skill to plan and construct aesthetical landscape and parks.

- Parks
- Landscapes
- Associated Facilities





Domain of Our Success

Engineering

FABCON design & engineering provides engineering services and consultancy to all potential and ongoing projects being undertaken by FABCON civil works. FABCON design & Engineering has wide range of expertise including structural, civil, infrastructural and mechanical engineering.

Our well-equipped team is committed to cope with any engineering and technical problem which surfaces in a project. Our engineering and technical staff handles the design and construction affairs, however, if there is some high profile core issue, our team of qualified and experienced consultants oversees it. We have a devoted team of hardworking supervisors, masons and technicians who have vast experience of construction works. .

Subcontract Management

All over the world, high profile companies do not do all the affairs by themselves but they employ the services of sub-partners and assign them work on the technical guideline set forth by the company. FABCON is making its way in this field and get its sub partners do the work under its supervision. Our engineers and supervisors look after quality, schedule and time management keeping in view the needs of the contract and desires of the client.

Tender Department

The Tender Department helps the project manager in marketing and in the assessment of prospective projects which are in the pipeline or under consideration. It manages various inputs and coordinates them into a single working unit.

FABCON's tender teams have built a market reputé for submitting outstanding and reasonable tenders which are organized into standard projects.

Accurate identification of the client's needs from tender documents and briefings

- Carefully planning each stage of the project work
- Getting technical input and prices from the best specialist subcontractors and suppliers
- Harnessing the knowledge of our experienced project staff
- Reiterating these steps until we achieve a precise degree of accuracy





Costing & Procurement

The costing and procurement department has the identical duty of assessing that project costs are professionally managed and efficiently monitored and also of providing ample procurement services to the project team.

This department serves all divisions of FABCON and orders in measure giving it the purchasing power to parley highly feasible rates for construction materials. This gives FABCON an edge during the tender process through its ability to deliver correct pricing on specified materials rather than estimates which may later need to be adjusted. Passing on the discounts to our tender rates is a key element of our ability to deliver the most competitive of tenders.

Contract Department

The contract department has experienced staff that is aware of construction complexities and various trends of planning and project management. They are liable to foresee and negotiate any explicit or implicit issue that may rise before or during the completion of the project. Their expertise works as a building block of our success. The contract department sees the project from root to top and assess its all the pros and cons and takes the client into confidence if any unforeseeable circumstances arise. It also prepares all the documentations of contracts which are signed by FABCON.

Planning Department

FABCON's Planning Department and its hardworking professional staff are responsible for effective management in planning, scheduling, monitoring and reporting functions during initial stages and on project sites. This department's role is critical for the effective management of FABCON projects.

The Planning Department commences its involvement with projects at tender age. The Planning Manager ensures quality method tactics for the work in the department which is adequately resourced and programmed in the most time and cost efficient manner.

Prior the commencement of a project, the Planning Manager ensures that suitably experienced planners are appointed and briefed on individual project requirements. These planners then prepare a detailed execution program with other members of the project.



Mechanical & Electrical Department

This department provides management expertise in Engineering, Procurement, Installation, Testing, Commissioning and Maintenance of Mechanical, Electrical, Plumbing, Instrumentation and Communication services required for FABCON tenders and construction projects. This expertise is provided across a variety of business sectors including Building, Telecom, Power and HVAC.

This department's scope of service is tailored to suit each project where it can participate in prequalification through engineering procurement, construction installation and commissioning. It also provides maintenance services to completed facilities.

Survey Department

Our survey department lends surveying services which support all the stages of our construction projects from the initial site surveys used for planning design and logistics through to the final stage as built surveys of completed works.

During the construction phase the survey department provides setting out services whether for substructure or work casting or building of the superstructure or providing line and level for following finishing trades.

Throughout project's duration, the survey staff maintains a highly interactive approach within the project team to seek solution design data or complex geometry to ensure these problems cause no delay in the project at hand.

The department also assists in verifying quantities during the tendering for new projects and calculating re-measured quantities for payment during ongoing construction works.

Information Technology

FABCON's information Technology (IT) Division takes a strategic approach in the application of technology to the company's operations. Its team develops high value applications in-house with many workable opportunities to the company. Its technology sophistication and depth of programming talent provides the company with a significantly competitive advantage. It also retains ownership of intellectual property in the form of programs developed specifically for engineering and construction industry requirements.





Human Resources

As FABCON progresses in leaps and bounds and seeks new opportunities in regional and international market, the human resources (HR) division continues to play a vital role in improving the company its competitiveness by developing the company's human resource potential.

Enhanced processes will also free the HR staff from routine administrative tasks and allow them to act as advisors and consultants to business units, and thus add value to the organization as a whole.

Knowledge management is also a huge priority. A comprehensive data warehouse is in the process of being built to support efficient and effective decision making. This aims to capture and present, in useful competitors, developments, industry trends and opportunities, and global market, all which may influence FABCON's future growth and success.

Quality, Health, Safety and Environment

Quality, health, safety and environmental concerns are indivisible to our business attitude. We show no compromise on these core issues as our track record demonstrates our conscientious efforts in matching international standards in these fields. QHSE is a highly management precedence which calls for superlative administrative skills and our organization is chiefly designed to set high standards in this domain.





Quality Assurance (QA)

Quality assurance is the hallmark of our business. We are a quality conscious corporation whose culture is to improve its standard with all possible means which latest technology, best material and a team of highly trained staff can promise. As a part of that commitment, we are ISO 9001:2008 certified by Bureau Veritas. FABCON has established and maintained quality management system i.e. FIMS (FABCON Integrated Management System), that is an integral part of all our operations and processes. It comprises of Manual, Standard Operating Procedures (SOP's), Method Statements (MS's) and Forms.

Our main objective is the satisfaction of our customers besides the upholding of our own goodwill which does not allow us to seek any substandard way to show the glimmers of performance where in fact there is none. Our quality is our recognition.

Quality Control (QC)

Quality control means to ascertain a prime standard of quality in services. We achieve it with organizational skills to validate the level of our services as per international criteria. Our team of highly qualified supervisors watches the quality of our products, structures and constructions and we have zero tolerance on our set parameters of quality.

Our managerial skills observe the procurement of prime quality stuff available in the market. We have the services of competent workers who are authority on their respective field. That's why; we win the confidence and trust of quality conscious customers who expect the best performance from us.

Health, Safety & Environment

FABCON's Health, Safety and Environmental Management System is designed to incorporate the management of HSE practices into one program that coordinates all business activities into one whole. This synchronization of all activities maintains the highest standard touching HSE. FABCON is immensely concerned for environmental issues and our construction spree never transgresses atmospheric code of conduct.

FABCON is fully mindful to the health and safety of its workers. For this purpose, we have a team of well-equipped medical staff, headed by a senior physician. Besides, the use of all safety gear is made compulsory at her sites. That's why; FABCON has zero workplace accidents. FABCON provides medical facilities to its employees free of charge. We take HSE not as a paper work but a virtual practice regarding to all site operations. We take it as a responsibility, an uncompromising obligation.





Workplace Ethics

Workplace ethics comprises those principles and values which rule the conduct of those who are at the helm and of those who work in that environment. Both of them have to follow some tenets which define their boundaries and they observe them without any stress or strain. FABCON is first one in this land which has introduced workplace ethics. All from SEO to page boy in the office observe them with good grace. No one violates others rights of place. That's why; FABCON cherishes a favorable atmosphere of work where each employee shows his full potential without any untoward hindrance. FABCON is free from all kind of workplace violence.

Workplace Wellness Program

FABCON is not insensible to the welfare of its employees. Our workplace wellness program includes educational, health and environmental issues. We offer education and health facilities and ethical coaching program which is designed to remove any workless stress or anxiety which may hamper their performance. It is the result of this program that the employees work in an ideal atmosphere where they shun all the worries of leg pulling or poking one's nose into others matters. They love to work as they find their executives have a mind for their welfare.



Workplace Protocol

Each company and organization works like a living entity. It has an organizational body and then a site operational unit. Each one has its definite function. It defines the sphere of operation of each employee. It is called workplace protocol and the success of an organization lies strictly conforming to this protocol. FABCON is pretty clear in this regard. Each staffer knows what he is meant to do. When a person joins our organization, he is given a charter of codes which he is supposed to follow while working in our prestigious unit.

HIGH RISE FRAME STRUCTURE BUILDINGS

Area: 100,000 SFT

Project : 7 Storey Officers Residences
Location : Rawalpindi Cantt
Client : Military Engineering Services

- Three High Rise Multi Story Frame Structure Building
- 7 floor with Basement & Play Grounds
- 65,000 SFT area of each Block
- Complete with Ancillary Works.



MULTI STOREY FRAME STRUCTURE BUILDINGS



Project : 3 Storey Armed forces Officers Residences
Location : Rawalpindi Cantt
Client : Military Engineering Services

Scope:

FABCON Scope of work includes the following

- Excavation, Earth Removing, Filling, Compaction etc
- Foundation Work
- RCC Frame Structure
- Block Masonry Work
- Plastering of Walls
- All kind of Electrical Wiring & Installation of Piping for Water & Sui Gas
- All kind of Floor Finishing (Marble & Tiles)
- Wash Room Finishing including all Accessories Tile Works, Plumbing Works
- Outer Finish by Graphito or Sand Stone Installation
- Water Drainage, Foot Path Works, Land Scope Work, Boundary Wall etc.





Sr. No.	Type	Area	Location	Client
01	RCC Frame Structure 3 story, D type, Residential Blocks each having 18 houses	3 Blocks each having area of 30,000 SFT, Thus making total area 90,000 SFT	Rawalpindi	MES
02	RCC Frame Structure 3 story, D type, Residential Blocks each having 18 houses	5 Blocks each having area of 30,000 SFT, Thus making total area 150,000 SFT	Rawalpindi	MES
03	RCC Frame Structure 4 story, D type, Residential Blocks each having 18 houses	4 Blocks each having area of 37,000 SFT, Thus making total area 148,000 SFT	Rawalpindi	MES
04	RCC Frame Structure 4 story, E type, Residential Blocks each having 18 houses	1 Block, having area of 26,000 SFT.	Rawalpindi	MES
05	RCC Frame Structure 4 story, D type, Residential Blocks each having 18 houses	2 Blocks each having area of 37,000 SFT, Thus making total area 74,000 SFT	Rawalpindi	MES
06	RCC Frame Structure 4 story, E type, Residential Blocks each having 18 houses	1 Block, having area of 26,000 SFT.	Rawalpindi	MES



INDUSTRIAL INFRASTRUCTURE

Area: 100,000 SFT

Project : Building and Infrastructure for Engineering Company

Location : I-9 Islamabad, Punjab

Client : Eastern Testing Services

Scope :

FABCON Scope of work includes the following

- 3 Story Frame Structure Building 25,000 SFT
- Pre-Engineered Building Stage 5,250 SFT
- Open ware House
- Rainy Water Drain
- RCC Flooring
- Boundary Wall, Security Gates and Parking
- Land Scaping





HIGH STRENGTH RCC CONSTRUCTIONS

High Strength RCC Construction for the following;

●	150 men Barracks	:	16,000 SFT
●	75 men Cook House	:	2,200 SFT
●	Officers Quarter	:	2,800 SFT
●	Office Accord	:	3,200 SFT
●	POL Stage	:	200 SFT
●	Landry Shop	:	400 SFT
●	Canteen	:	300 SFT
●	Boundary Wall	:	10,000 SFT

High Strength RCC Construction for the following;

●	32 men Barracks	:	6,000SFT
●	Special Barraks	:	4,000 SFT
●	Special Complex	:	3,200 SFT

High Strength RCC Construction for the following;

●	32 men Barracks	:	8,500 SFT
●	50 men Cook House	:	6,000 SFT
●	Special Cell	:	6,000 SFT
●	SOS Annexy	:	4,500 SFT

High Strength RCC Construction for the following;

- High Rise Multi Story Frame Structure Building
- 7 floor with Basement & Play Grounds
- 65,000 SFT area of each Block
- Complete with Ancillary Works.

High Strength RCC Construction for the following;

●	Squash Room	:	3,000 SFT
●	Office Block	:	5,000 SFT
●	Mosque	:	2,500 SFT
●	Tube Well Operating Room	:	200 SFT
●	RCC Hall	:	1,500 SFT
●	Assembly Hall	:	12,000 SFT





RESIDENTIAL HOUSING SCHEMES

LOCATION : LAHORE & RAWALPINDI

DETAILS : All type of activities executed being requirement of 1st Class Residential Construction.



Sr. No.	Plot Details	Plot Size	Plot Area	Units
01	5 Marla Houses	25 x 45	1,125 SFT	10
02	10 Marla Houses	35 x 65	2,275 SFT	15
03	1 Kanal Houses	45 x 75	3,379 SFT	10
04	2 Kanal Houses	75 x 150	11,250 SFT	15

THERMAL POWER PLANT

MULTI SOLID FLUE FIRED POWER GENERATION SYSTEM

Capacity : 6 MW
Project : Ihsan Textile Ltd.
Location : Faisalabad, Punjab

Scope :

FABCON Scope of work includes the following

- Foundation & Civil Works for Main Boiler
- Foundation of Bagasse Carrier, Chimney, Turbo Generator, Oil Heaters.
- Civil Works of Raw water storage tank
- Civil Works of Smoke Cleaning Tunnel
- Control Room and office block Building
- Foundations and Building for Steam Turbine
- Concrete Pavements and Floorings



WASTE HEAT RECOVERY

POWER PLANT

USING KILN FLUE GASSES

Capacity : 7 MW
Project : Cherat Cement Factory
Location : Nowshera, KPK

Scope :

FABCON Scope of work includes the following

- Civil Foundations
- Installation of Steel Structure
- Control Room Ancillary Works
- Installation of Waste Heat Recovery Boilers
- Installation of Turbo Generator Sets
- Installation of Pipe Lines, Valves & Accessories
- Construction of Walkways, Stairs, Gangways etc



PRE-ENGINEERED BUILDING PROJECTS

Scope:

These projects include the following scope of work;

- Design of Project Layout
- Structural design of Pre-Engineered Building, Foundation & Other RCC Works
- Supply of Pre-Engineered Building
- Installation of Pre-Engineered Building
- Construction of Foundations, Columns, Tie Beams
- Construction of RCC Frame Structure Type Peripheral Wall
- RCC Working Floor
- Sewerage, Water and Electric Jobs Relating to Projects
- Rain Water Disposal Piping and Drain Areas

Details:

Sr. No.	Client	Covered Area (Sq. ft.)	Location
01	CNC Nextec	27,000	Lahore
02	Sweet Water	11,200	Lahore.
03	Haideri Beverages	30,000	Islamabad
04	Symbol Industries	35,000	Lahore
05	Inter Home	29,000	Lahore
06	Haideri Beverages	37,500	Islamabad
07	Nestle Pakistan	22,000	Shiekhupura
08	Nestle Pakistan	610	Shiekhupura
09	Sweet Water	25,500	Lahore
10	Haideri Beverages	32,000	Lahore
11	Northern Bottling	27,700	Peshawar



GLASS DOME

52 FT. DIAMETER STEEL GLASS DOME

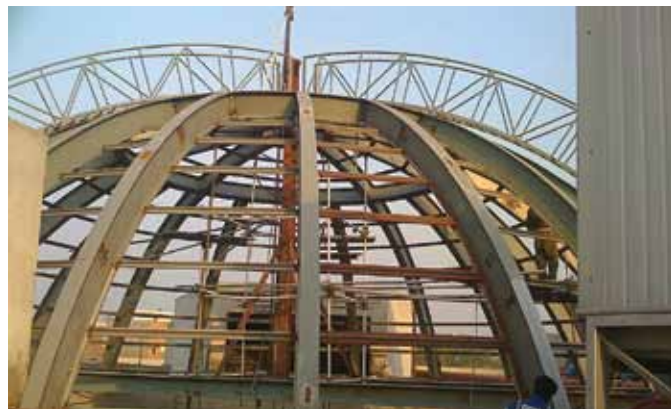
Project : C&W

Location : Minister Block , Lahore

Scope :

FABCON Scope of work includes the following

- RCC Hoop Beam Ring 1150 CUFT
- Electro Mechanical Works
- Installation of Glass Dome



BULK STORAGE TANKS

API 650 BASED DESIGN

Capacity : 45000 M TONS
Project : United Ethanol
Location : Hyderabad, Punjab

Scope :

FABCON Scope of work includes the following

- Concrete Ring Foundation and retaining wall 60,000 CFT
- Excavation and Back Filling = 60,000 CUFT
- Soil Works = 60,000 CUFT
- Concrete Pavement = 5,800 CUFT
- Sewerage Works



PYRAMID DOME

72 FT. DIAMETER; POLY CARBONATE GLAZED
PYRAMID DOME

Project : C&W
Location : Multan, Punjab

Scope :

FABCON Scope of work includes the following

- Construction of Column Foundations and Beams
- Installation of Steel structure
- Application of Long Life Polyurethane painting
- Installation of Poly-carbonate glazing
- Installation of Louvers type ventilators



BRIDGE RAILING

2.5 KM WIDE OVER HEAD BRIDGE

Project : Shalimar Interchange, Lahore
Location : Lahore, Punjab
Client : Frontier Works Organization

Scope :

FABCON Scope of work includes the following

- RCC barriers
- Installations of Steel Railing



PEDESTRIAN STEEL BRIDGE



120 ft. & 90 ft. Span, Overhead Steel Bridge

Project : C&W
Location : Multan, Punjab

Scope :

FABCON Scope of work includes the following

- RCC Foundations
- Concrete Pavements
- Grouting of Columns
- Installation of Steel Structure
- Application of Long Life Polyurethane painting
- Installation of Polycarbonate glazing



ROAD RAILING



30 KM, LAHORE-KASUR ROAD

Project : Habib Construction
Location : Lahore-Kasur, Punjab

Scope :

FABCON Scope of work includes the following

- Design of Steel Galvanized Pipe Railing 30 km long
- Fabrication and installation of Railing
- Concrete Foundations



Our Business Partners

- Frontier Works Organization



- National Highway Authority



- Communication & Works Deptt
(Govt of the Punjab)



- National Logistic Corporation



- Military Engineering Services

MES

- Pepsi Cola (Haidry Beverages)



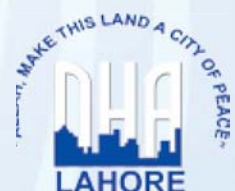
- Tandlianwala Sugar Mills Ltd



- Nestlé Pakistan



- Defence Housing Authority





FABCON 
Civil Works (Pvt) Ltd.

Contact us:

227 Sunder Industrial Estate,
Sunder-Raiwind Road, Lahore - Pakistan.

Tel: +92 42 352 97121-22

Fax: +92 42 352 97123

E-mail: info@fabconengg.com

www.fabconengg.com